



Florida Fish and Wildlife  
Conservation Commission

HCOL Hydrilla treatments  
October - November

---

*Managing fish and wildlife resources  
for their long-term well-being  
and the benefit of people*

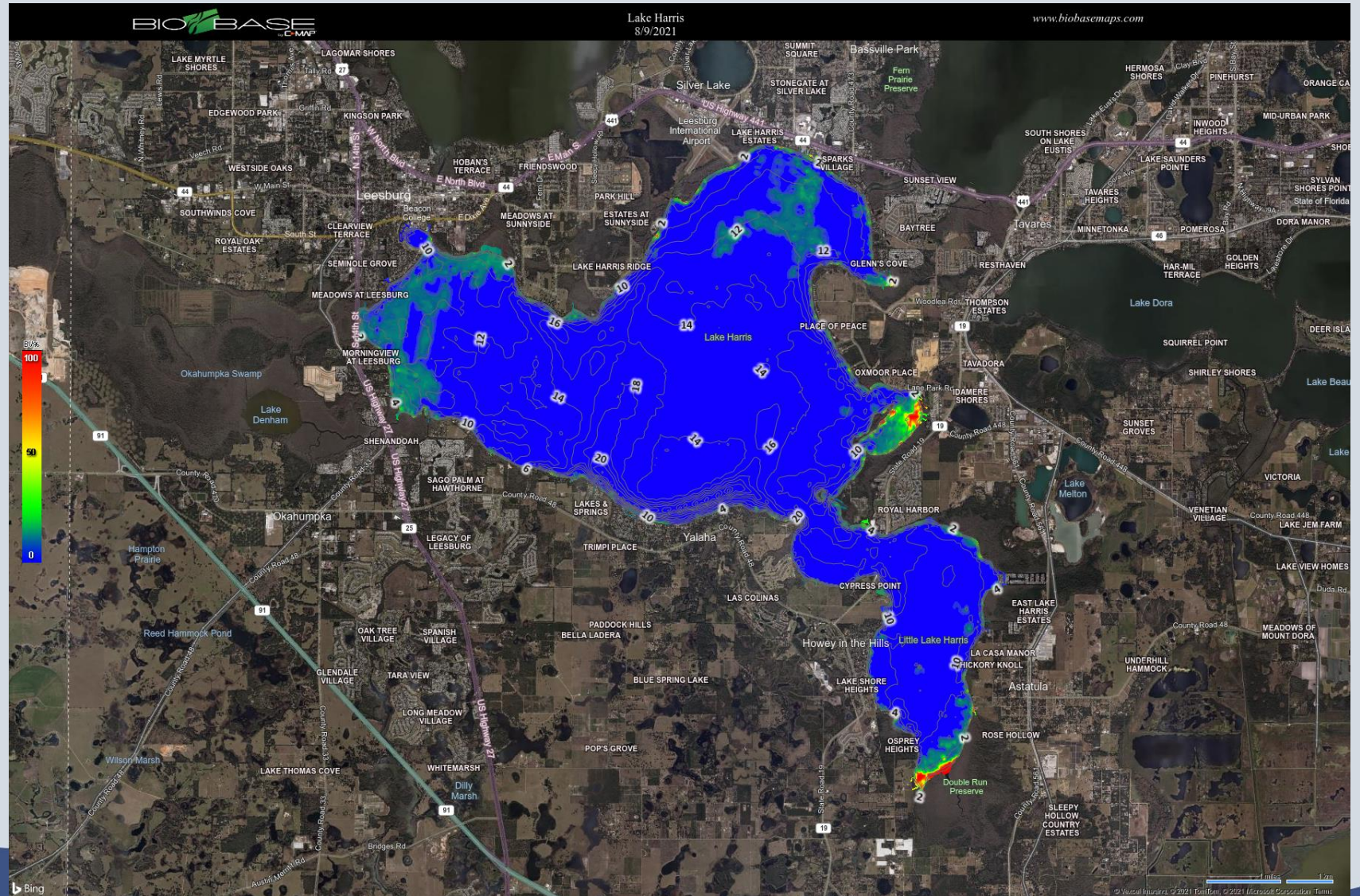
# HCOL hydrilla treatments

- Hydrilla treatments for Lake Harris, Little Lake Harris, Lake Griffin should start the week of October 18<sup>th</sup> to the end of month, weather depending.
- You will find information on FWC weekly schedule

<https://ipm-myfwc.shinyapps.io/whoml/>



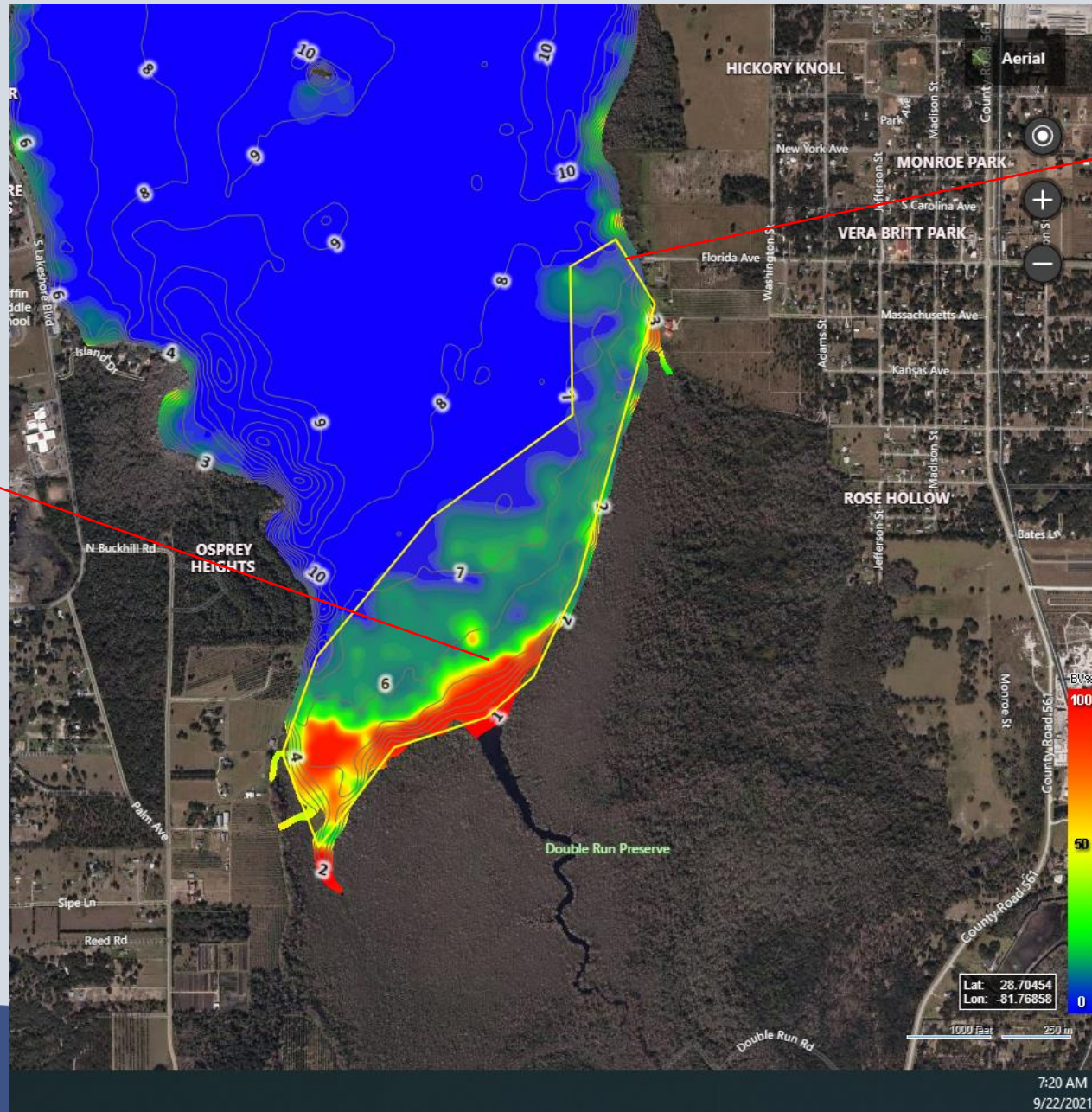
# Lake Harris/Little Lake Harris



# Little Lake Harris August 2021

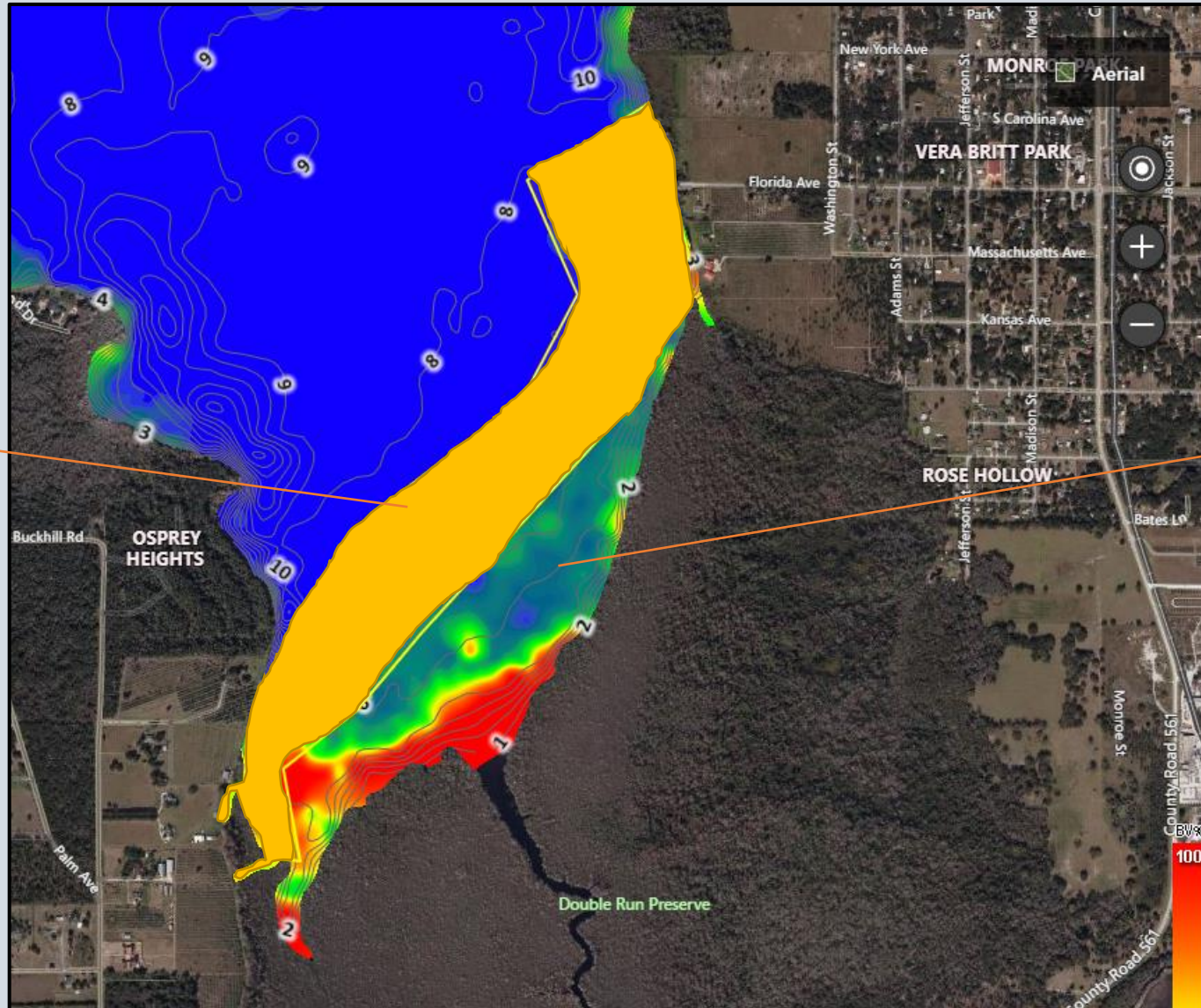
250 acres of hydrilla present

Public Boat ramp



# Little Lake Harris

150 acres plot.  
This treatment will help alleviate future navigation issues at the boat ramp (NE side of the plot and residential canals (SW side of the plot).  
It will also prevent the hydrilla from spreading outside Double Run area.



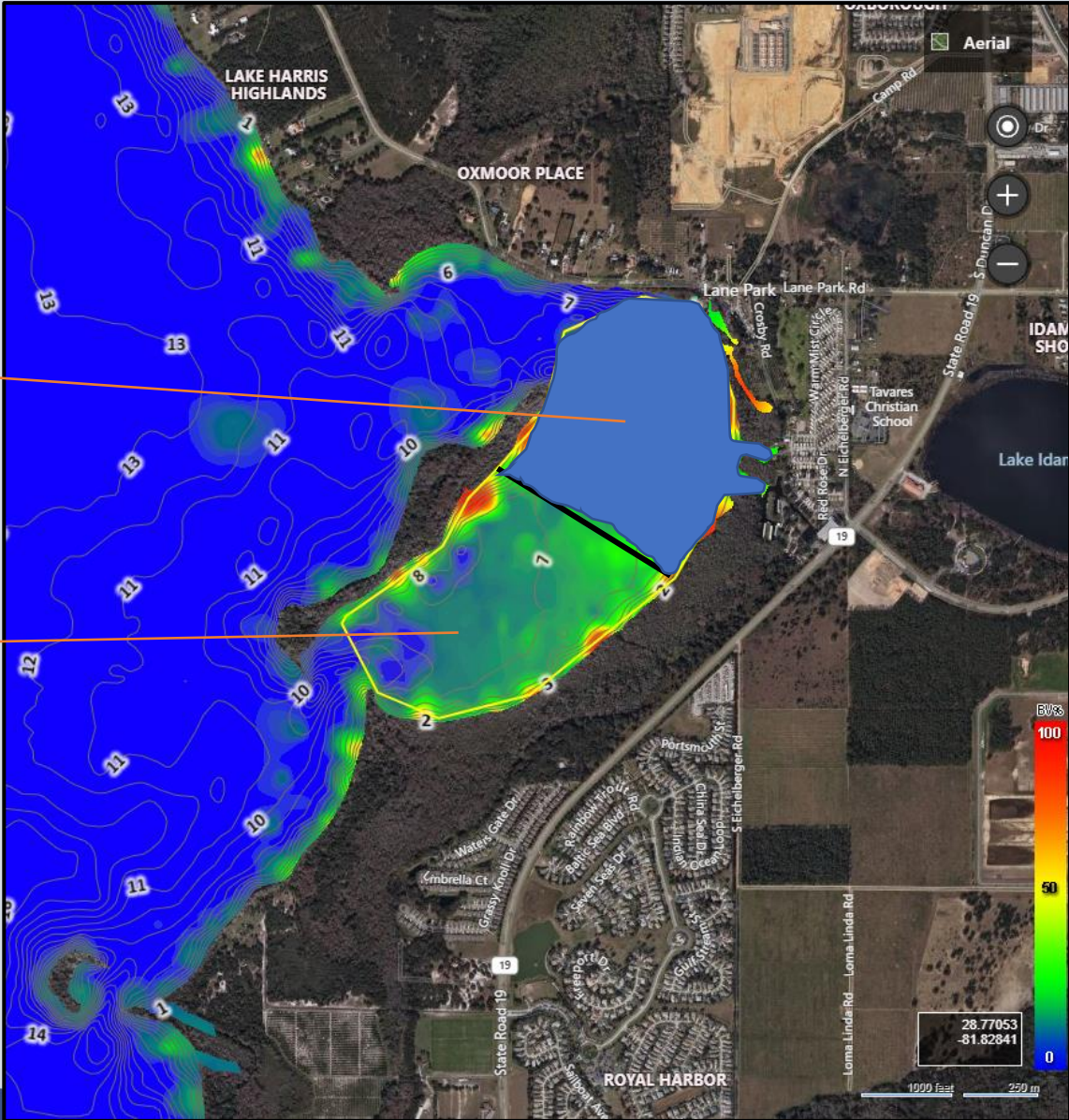
Area left untreated as designated of interest for anglers and duck hunters.



# Lake Harris

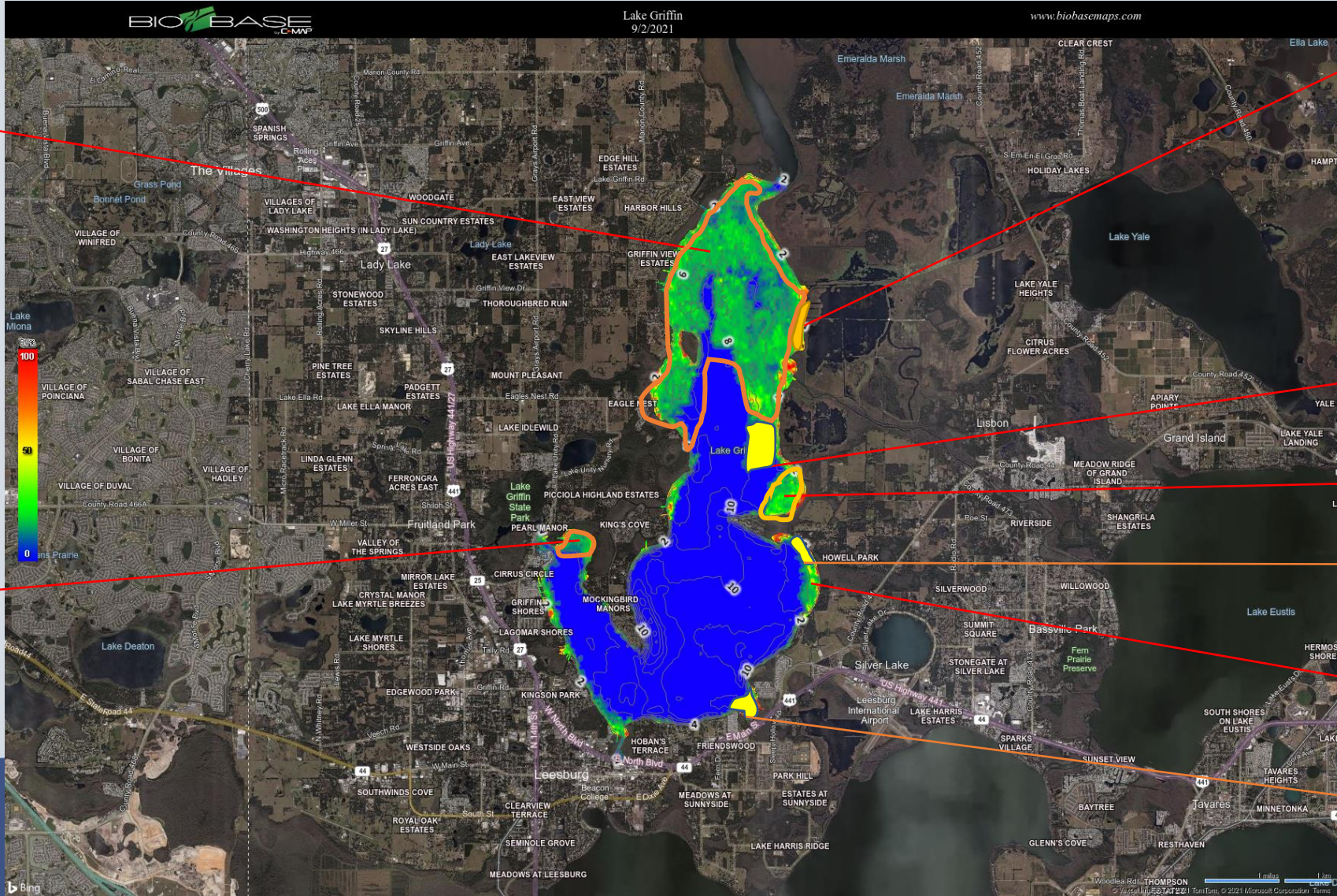
Long Island plot – 120 acre plot  
Hydrilla blocking navigation  
access to marinas and  
businesses.

Area left untreated as designated of interest  
for anglers and duck hunters.



# Lake Griffin

Dominance of Pondweed.  
Eelgrass/coontail/Naiad/  
Bladderwort  
Hydrilla mixed 20%



Hydrilla present between  
Haines creek and Yale-griffin  
canal :Regrowth along the  
shoreline

Hydrilla 100%

Mix of eelgrass/pondweed/  
coontail/ Bladderwort/  
Hydrilla (20%)

Hydrilla 100%

Eelgrass/bladderwort/  
Coontail

Hydrilla 100%

Eelgras/bladderwort  
Hydrilla (10%)



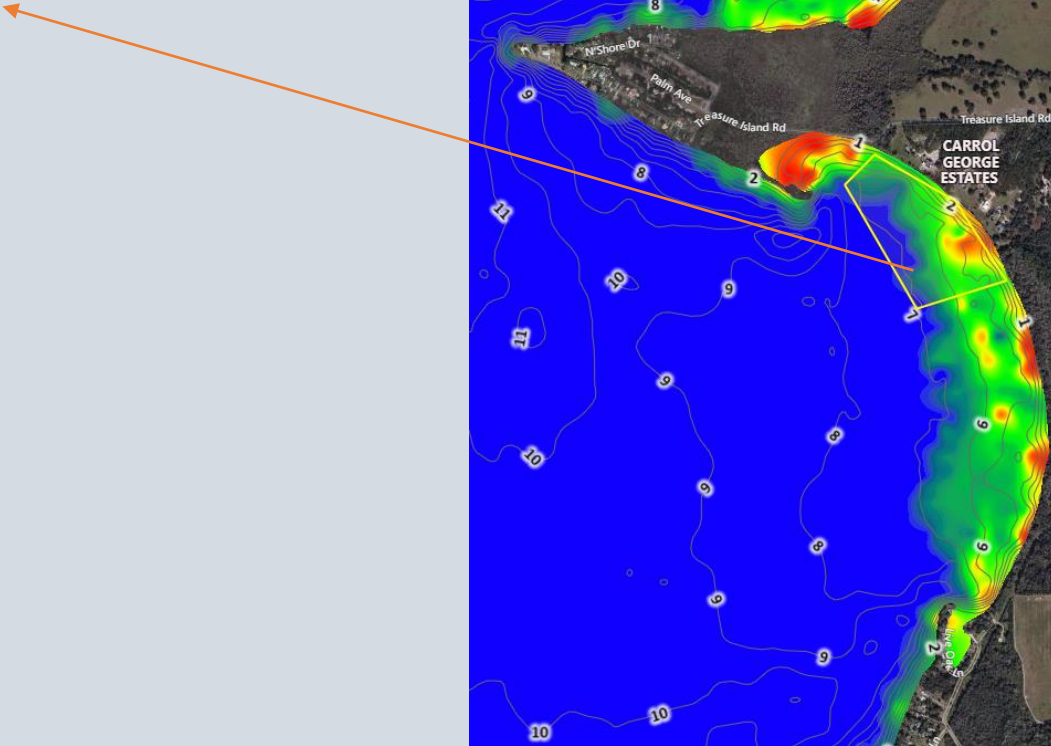
# Lake Griffin

- Lake Griffin supports a healthy and thriving diversified native submerged aquatic plants as seen on the previous map
- Monoculture of Hydrilla treatments are scheduled
  - to provide access to residential shorelines and businesses (Bayou canal and South of Treasure Island)
  - promote the expansion of the native submerged aquatic plants population already present (South of Haines Creek and Yale-Griffin canal)





Treasure Island South  
Residential shorelines – 50 acres



# South of Haines Creek

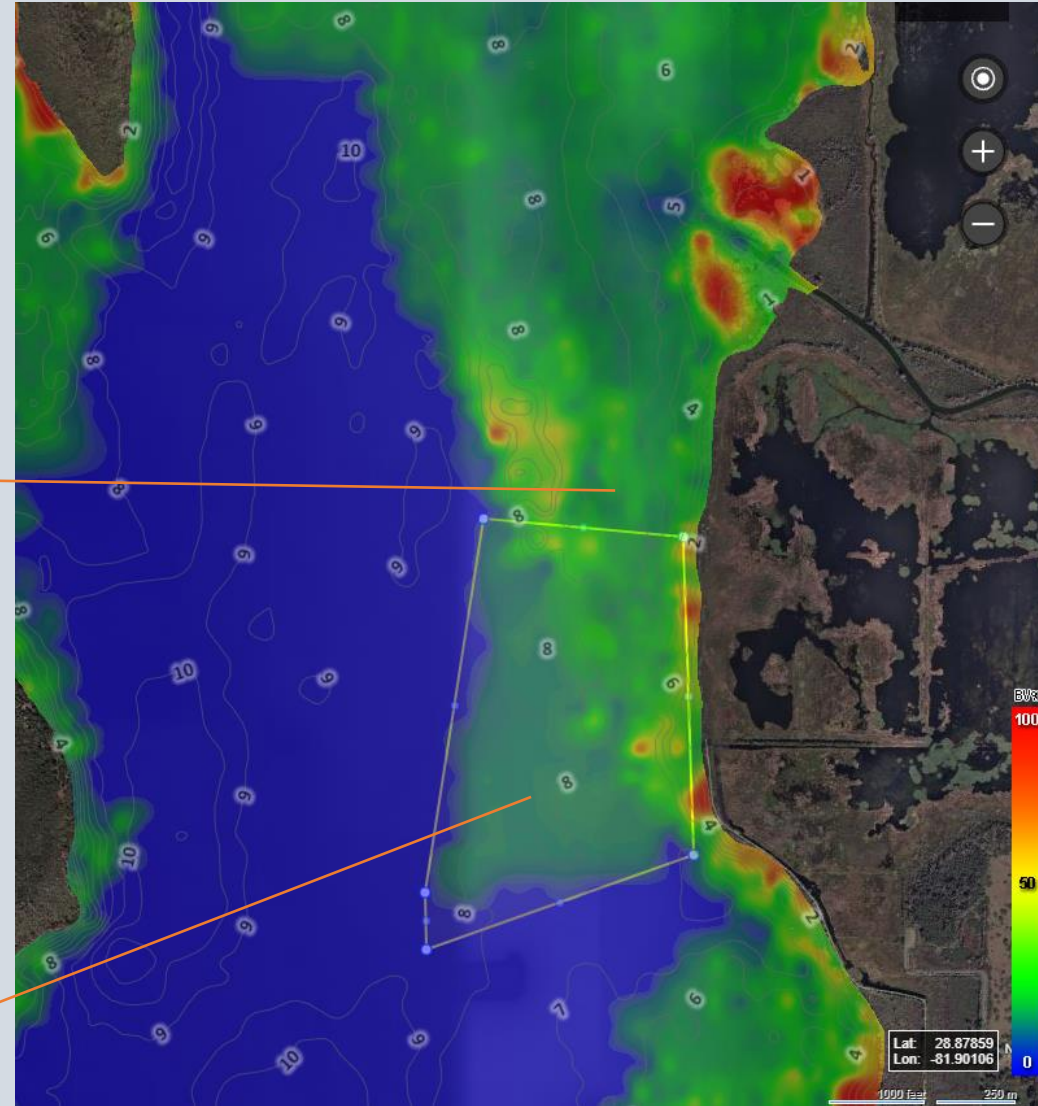
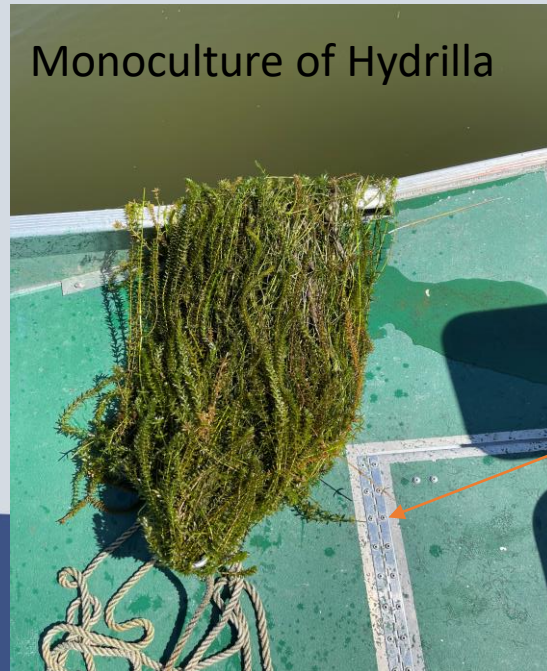
100 acres monoculture of hydrilla

Will promote the extension of surrounding native  
Submerged plants such as Naiad/eelgrass

Thriving Southern Naiad

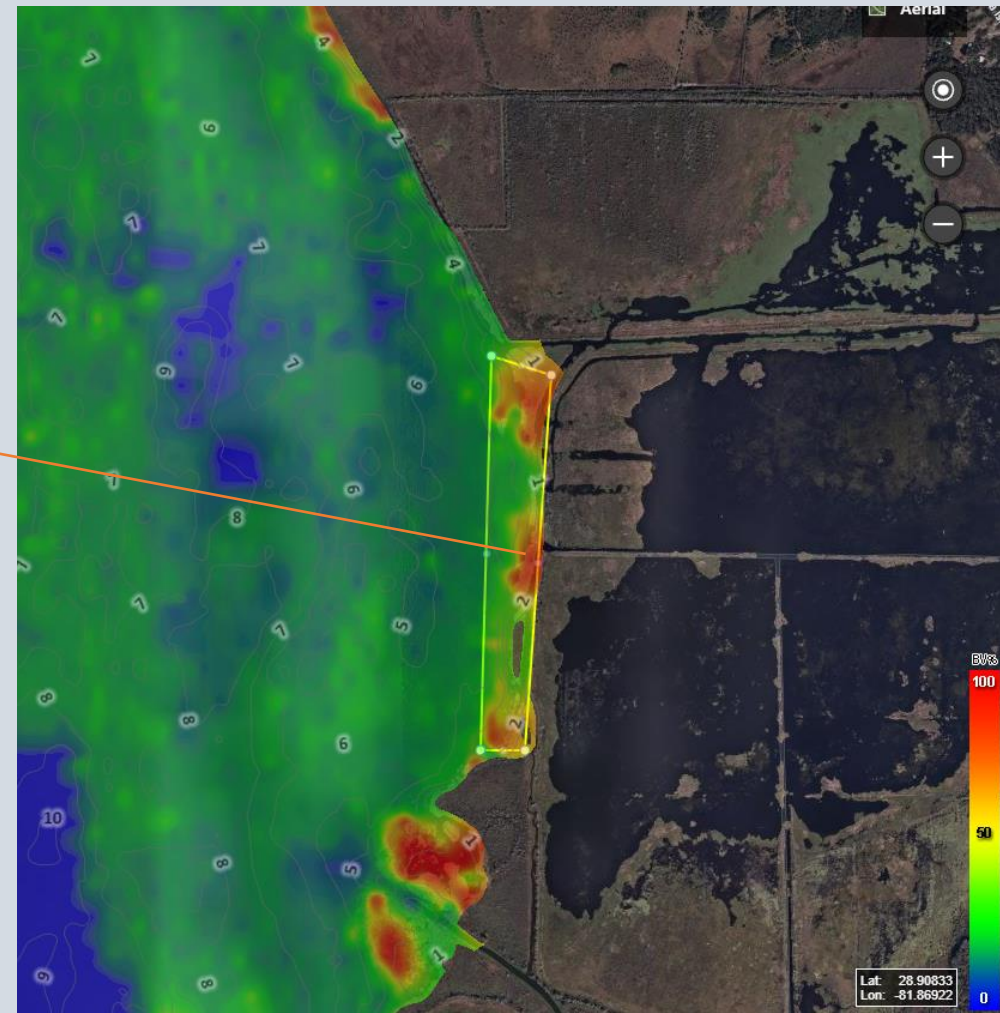


Monoculture of Hydrilla




## South of Yale-Griffin canal


In Spring 2021, we treated 200 acres of monoculture of Hydrilla in this area. Since then, we have noticed the expansion the native submerged plants. We are seeing a 50 acres regrowth area. Treatment will promote the extension of native plants already present such as Eelgrass/Naiad/Coontail



# For general information on what's happening on my lake

[MyFWC.com/Lake](http://MyFWC.com/Lake)

What's Happening on my Lake?  **Waterbody Info** ▾ Aquatic Plants ▾ Fisheries ▾



**Filter Waterbodies**  
Ex: Kissimmee

- Plant Mgmt Schedule of Operations
- Current FY Plant Mgmt Workplan
- IPM- Aquatic Plant Survey
- Invasive Plant Historical Treatment
- Statewide Plant Control Trends
- Long-Term Plant Monitoring

[MyFWC.com/Lake](http://MyFWC.com/Lake)

General Waterbody Info





Thank you!

Nathalie Visscher

[Nathalie.Visscher@myfwc.com](mailto:Nathalie.Visscher@myfwc.com)

